

TERA[®]-MAX[®] Patch Panels

TERA-MAX 19 inch patch panels provide outstanding performance and reliability in a shielded, high-density modular solution. As outlets are snapped into place, resilient ground tabs assure that each outlet is properly grounded. No secondary outlet grounding operations are required, reducing overall installation time.

MODULAR PATCHING

Angled TERA-MAX — Allows direct routing of cables to vertical managers, eliminating the need for horizontal cable managers



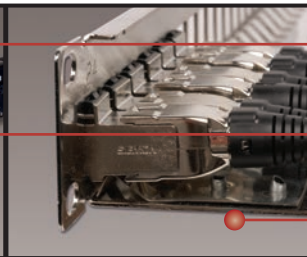
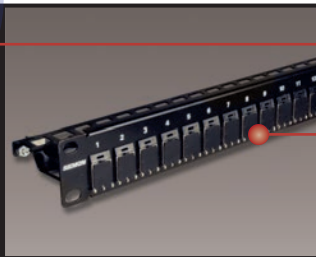
Standard Fit — Panels can be mounted directly on standard 19 inch relay rack or cabinet

Durable — High strength steel with black or metallic finish

Port Identification — Bold port numbering enables quick identification of outlets



Installation Friendly — Individual modules snap into place, providing integrated grounding without additional steps



Integral rear cable manager facilitates the orderly routing of horizontal cables as well as maintaining proper bend radius for optimum performance.

Use TERA outlets in TERA-MAX patch panel for telecommunications room applications.

Panels feature integrated grounding via resilient ground tabs engaged during module insertion.

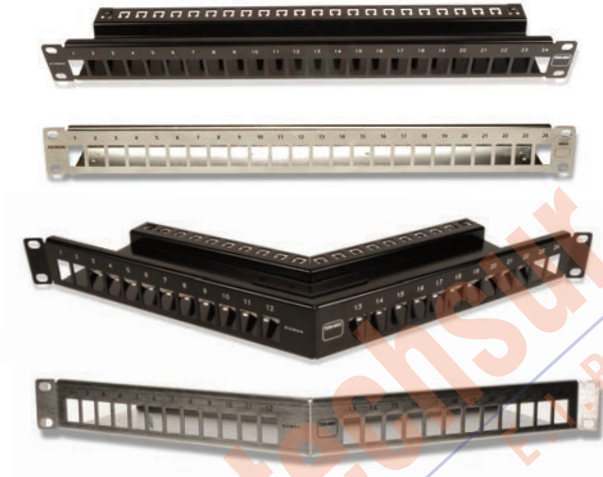
Product Information

MODULAR PATCHING

TERA® -MAX® Patch Panels

Part #	Description
TM-PNLZ-24-01	24-Port flat TERA-MAX panel, 1U, black
TM-PNLZ-24	24-Port flat TERA-MAX panel, 1U, metallic
TM-PNLZA-24-01	24-Port angled TERA-MAX panel, 1U, black
TM-PNLZA-24	24-Port angled TERA-MAX panel, 1U, metallic
PNLA-CVR-01	Angled panel cover, black

Panels include designation labels, cable ties and mounting hardware.
 Note: 1U = 44.5mm (1.75 in.)



Corporación Lintechsur S.A. S.R.L.



Because we continuously improve our products, Siemon reserves the right to change specifications and availability without prior notice.

Worldwide Headquarters
North America
 Watertown, CT USA
 Phone (1) 860 945 4200

Regional Headquarters
Europe Russia Africa
 Chertsey, Surrey, England
 Phone (44) 0 1932 571771

Regional Headquarters
China
 Shanghai, P.R. China
 Phone (86) 215385 0303

Regional Headquarters
Latin America
 Bogota, Colombia
 Phone (571) 657 1950/51/52

Regional Headquarters
India Middle East
 Dubai, United Arab Emirates
 Phone (971) 4 3689743

Regional Headquarters
Asia Pacific
 Sydney, Australia
 Phone (61) 2 8977 7500

Siemon Interconnect Solutions
Watertown, CT USA
 Phone (1) 860 945 4213 US
www.siemon.com/SIS